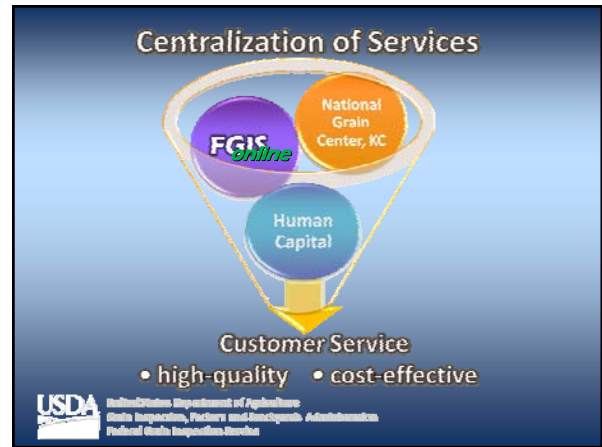


- ### Grain Inspection Advisory Committee Meeting Resolutions
- Private party inspection program
 - Sorghum odor
 - Financial reporting
 - Fiscal responsibility
 - Training course development
 - Teff test results
- USDA United States Department of Agriculture
State Inspection, Packers and Stockyards Administration
Federal Grain Inspection Service



- ### FGIS Online
-
- Portfolio of business applications
 - Bringing official inspection and weighing to the desktop
 - Key applications relate to certification, data storage, and licensing.
- USDA United States Department of Agriculture
State Inspection, Packers and Stockyards Administration
Federal Grain Inspection Service

- ### Quality Management Program
- GIPSA is collaborating with official service providers to incorporate principles of modern quality management programs into the official system
-
- USDA United States Department of Agriculture
State Inspection, Packers and Stockyards Administration
Federal Grain Inspection Service

Contract/Load Order Comparison

- **Purpose:** Determine compliance with GIPSA policy that load orders reflect contract specs
- **How:** Survey of export shipments, including ships, rail and containers
- **Action:** Discrepancies will be addressed with shipper
- **Time Frame:** Thru at least 2010

Study Regarding Use of Contractors for Export Services

- Reauthorization of USGSA – 2005
- Pilot Project at Export Port Locations
 - Labor and Full Inspection/Weighing Services
- No Significant Long-Term Savings to Exporters
- Integrity and Confidence in System
- Report of Findings

Export Container/Phytosanitary Issues

- Exponential growth
- Official system challenged to keep pace
- GIPSA reviewing procedures
- APHIS policy change increases GIPSA phytosanitary inspection responsibilities
- Submitted samples not accepted for basis phytosanitary certification

Sorghum Odor Line Validation

- **Goal:** ensure the sorghum odor line continues to facilitate marketing
- **Objectives:**
 - ensure odor line reflects market's needs
 - ensure consistency in application throughout official system
- **Value:** partnerships with official agencies and market

Wheat Classing Determinations

- **Wheat Classing Determined by Visual Characteristics**
 - New varieties many not have traditional visual characteristics
 - Official inspection personnel must constantly train to properly maintain proficiency in assigning the correct class and identify mixtures
- **GIPSA to Provide Training**
 - Quality Assurance Specialists in the domestic and export markets to be trained

Farm Gate and Export Quality Assessments

- **Farm-Gate Assessments: Soybeans & Sorghum**
 - Create a baseline of grading quality by capturing inspection data at the beginning of the marketing chain.
 - Sorghum initiated in 2006, soybeans in 2007
- **Soybean Export Assessment**
 - Sub-lot data captured at export locations

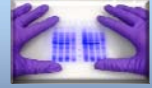
Trade with Mexico

- **Identified logistical barriers to trade**
 - Meetings with freight forwarders, brokers, SENASICA inspection offices, importers
 - Explained FGIS export role and *FGIS OnLine*
 - Identified issues causing clearance delays



Japan Biotech Update

- **June 2008, MAFF proposed exit strategy**
 - Applies only to feed imports, not food
- **Elements contrary to U.S. (LLP) policy**
 - Risk-based vs. defined thresholds
 - **USDA's response** – “will cooperate”



GIPSA's Overseas Officers in Asia

- Program began in 2002
- Last assignment – May – Sep '08 (Hong Kong base)
 - 7 country visited
 - 14 Grading seminars
 - Containers
 - Continued support for program

